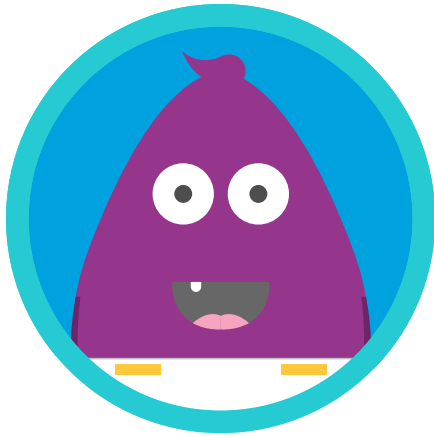


What is the process for intervening early?



HERE'S WHAT HAPPENS FOR CHILDREN UNDER 3

To see the process for children over 3, to learn more about costs and what to do for children almost three, see the reverse side.

1

Every state has their own early intervention system. [Click here](#) to find your state's system. In Ohio, each community has a designated contact for referrals. **To find the contact for your community, [click here](#).**

2

This designated person contacts the family right away to confirm interest and schedule developmental screenings and assessment.

As a physician, you may be asked to provide additional information, medical diagnosis, or existing developmental screening results. You will be notified of referral results.

3

A service coordinator is assigned to assist the family through the **eligibility determination process** and will be at the screenings and assessment appointment.

4

Service coordinators work with families to **determine goals and priorities** for their family and child.

5

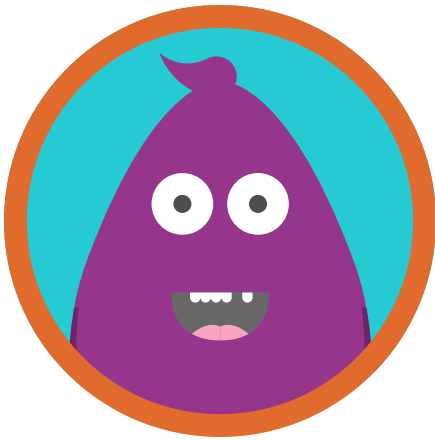
After that, a family's service coordinator helps them **match services in their community** to their priorities. This happens within 45 days of the original referral.



The Childhood League Center is one possible provider of services. Families can learn more about their programs and approach at childhoodleague.org.



AS SOON AS THERE IS A CONCERN ABOUT A CHILD'S DEVELOPMENT, IT IS CRITICAL TO INTERVENE RIGHT AWAY. THE EARLIER YOU INTERVENE, THE GREATER THE GAINS, SO EVERY MOMENT MATTERS.



**HERE'S WHAT
HAPPENS FOR
CHILDREN
OVER 3**

To see the process for children under 3, see the reverse side.

IF A CHILD IS ALMOST 3?

An early intervention service coordinator can assist the family with this transition. Connect the family with early intervention right away. *(see reverse side)*

1

If a child is over the age of 3, the first step is for a family to **contact their local school district** for developmental screenings and assessment.

2

There is a multi-disciplinary team within their local school district who **conducts an evaluation**; referred to as the Evaluation Team Report (ETR).

3

If eligible, an **Individualized Education Plan (IEP) team meets with the family** to determine goals and priorities for their child.

4

After that, a child **receives services** to support those priorities within their district's educational system.



The Childhood League Center is one possible provider of services. Families can learn more about their programs and approach at childhoodleague.org.

WHAT ABOUT COSTS?

Screenings, assessments, evaluations and plans are all free of charge. Most services are also free of charge for families, but if there is a cost associated with a service, this will be explained prior to starting services. Families may, at any point, reject services without affecting the other services they receive. *(This applies to both early intervention and preschool services.)*